




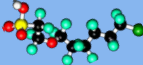




WC Sustainability Campus Program Booking Form

No
cost

Return completed form to brittany.wiltjer@wasteconnections.com

Can't come to us? We can come to you!

min. Age	Educational Programs (Each: 1 hour)	Preferred Date DD/MM/YY (Tuesday to Friday)	Preferred Start Time (6:30 AM to 6:30 PM) <i>1 hour per program</i>	Group Size & Age Minimum group size: 8 Max group size: 30 excl. chaperones/teachers	Location At the Sustainability Campus OR your site (include address/classroom if applicable)	Tour Selection (Check all that apply) <u>Tours only available at Sustainability Campus</u>	
(2+)	Introduction to Sustainability 			Group Size (8-30): Age Range (2+ minimum):		Landfill	
	Bees, Pollinators, and Native Plants 			Group Size (8-30): Age Range (2+ minimum):		Beehives	
	How a Landfill Operates 			Group Size (8-30): Age Range (2+ minimum):		Greenhouse	
(8+)	PFAS: The Forever Chemical 			Group Size (8-30): Age Range (8+ minimum):		Landfill	
	Bio-gas and Renewable Energy 			Group Size (8-30): Age Range (8+ minimum):		PFAS Plant	
(17+)	History of Champ Landfill 			Group Size (8-30): Age Range (17+ minimum):		Landfill	

Important Notes: 1. Our single program coordinator allows us to operate one program at a time, with a capacity of 30 learners.
2. Up to three programs may be booked per day, provided they are scheduled at separate times.

WC Sustainability Campus located: 2443 Creve Coeur Mill Rd. Maryland Heights, MO

Commonly Ask Questions

Q: Can I book multiple programs on a single day?

Yes, so long as the programs are scheduled at different times. We have a single program coordinator that allows us to operate one program at a time, with a capacity of 30 learners.

Q: My group is larger than 30, can I still book a program?

30 learners (excluding chaperons and teachers), is our max capacity for a single program. For groups exceeding this limit, we recommend dividing participants into multiple sessions, which may be scheduled on the same day during separate time slots. As we operate with a single program coordinator, only one session can be conducted at a time. We also advise hosting programs at your location rather than at the Sustainability Campus, as our coordinator is able to move efficiently between classrooms.

Q: My child is in home school and there are less than 8 students in the group, can we still book a program?

8 learners (excluding chaperons and teachers), is our minimum group size for a single program. However, if your home school group is less than 8 learners, we at Waste Connections can combine your group with several of our preexisting home school groups.

Q: The program I want has multiple tour options. Can I select more than one tour?

Yes. If your program offers multiple tour options, you may register for as many—or as few tours—as you wish.

Q: How do I only book a tour and not the the full educational program?

Just reach out to us expressing so and we will get it booked for you.

Q: Our group does not have a bus, can we still have a landfill tour?

Yes, if your group does not have a bus we will individually drive to the landfill overlook (2 minute drive). The overlook is a slightly obstructed view of the landfill. This is the alternative to the landfill bus tour.

Q: How much does it cost to book an educational program to take place at my location?

Everything is free. Even if we come to you.

Q: How do I fill out the Program Booking Form?




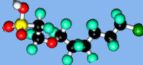


Review the example on the next page.



WC Sustainability Campus Program Booking Form

No cost

Return completed form to brittany.wiltjer@wasteconnections.com

Age	Educational Programs (Each: 1 hour)	Preferred Date DD/MM/YY (Tuesday to Friday)	Preferred Start Time (6:30 AM to 6:30 PM) 1 hour per program	Group Size & Age Minimum group size: 8 Max group size: 30 excl. chaperones/teachers	Location At the Sustainability Campus OR your site (include address/classroom if applicable)	Tour Selection (Check all that apply) <i>*Tours only available at Sustainability Campus*</i>	
(2+)	Introduction to Sustainability 	11/26/26	11:00AM	Group Size (8-30): Age Range:	SUSTAINABILITY CAMPUS	Landfill	
	Bees, Pollinators, and Native Plants 			Group Size (8-30): 15 Age Range: 65+		Beehives <input checked="" type="checkbox"/>	Greenhouse <input checked="" type="checkbox"/>
				How a Landfill Operates 		Group Size (8-30): Age Range:	Landfill
(8+)	PFAS: The Forever Chemical 	10/21/26	9:00 AM 10:00 AM 12:00 PM	Group Size (8-30): Age Range:	HAMILTON ELEMENTARY SCHOOL 12345 BROWN RD, ST CHARLES, MO 63301 CLASSROOMS: 408, 409, 502	PFAS Plant	
	Bio-gas and Renewable Energy 			Group Size (8-30): 30 Age Range: 8-10		Landfill	
(17+)	History of Champ Landfill 	Example of same day back to back bookings at your location.		Group Size (8-30): Age Range:	Be sure to list every room we will be visiting at your location.	Landfill	

Important Notes: 1. Our single program coordinator allows us to operate one program at a time, with a capacity of 30 learners.
2. Up to three programs may be booked per day, provided they are scheduled at separate times.

WC Sustainability Campus located: 2443 Creve Coeur Mill Rd. Maryland Heights, MO



Program Summary

1 hour long

Educational Program

(Ages: 2+)

Introduction to Sustainability



Topics Covered in Presentation

- Definition of sustainability
- The greenhouse gas effect
- How a landfill manages greenhouse gases
- Ways you can be sustainable

Activity

A recyclable Craft

craft varies based on available material



Tour Options

Landfill Bus Tour
requires bus



Landfill Overlook
NO bus required



PFAS Plant



Greenhouse



Beehives





Program Summary

1 hour long

Educational Program

(Age: 2+)

Bees, Pollinators, and Native Plants



Topics Covered in Presentation

- The pollination process
- A pollinators life
- How Champ Landfill is supporting bees
- What happens inside a beehive
- Ways to support pollinators

Tour Options

Greenhouse



Beehives

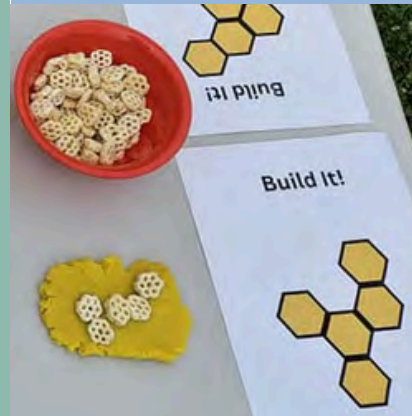


Activity

(Age: 2-6)

Help bees pollinate

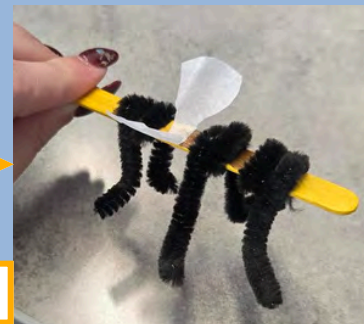
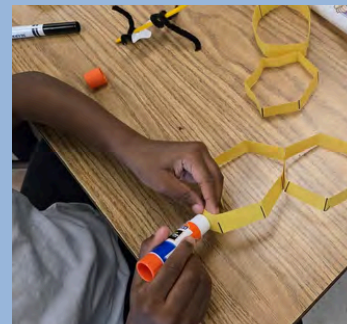
Build a beehive



(Age: 7-10)

Build a bee

Build a hive (paper)



(Age: 2+)

Hive Handling





Program Summary

1 hour long

Educational Program

(Age: 8+)

Bio-gas and Renewable Energy



Topics Covered in Presentation

- How a landfill can turn trash to renewable energy
- How a gas combustion engine turbine works

Activity

Build a sustainable landfill



Tour Options

Landfill Bus Tour

requires bus



Landfill Overlook

NO bus required





Program Summary

1 hour long

Educational Program

(Age 17+)

History of Champ Landfill



Topics Covered in Presentation

- How a donkey and cart in 1927 turned into Missouri's number 1 landfill today

(No Activity)

Tour Options

Landfill Bus Tour

requires bus



Landfill Overlook

NO bus required





Program Summary

1 hour long

Educational Program

(Age: 2+)

How a Landfill Operates



Topics Covered in Presentation

- The different roles it takes to operate a landfill
- How to run a landfill

(Landfill tour groups will skip the presentation. The same topics are covered).

Activity

Build a sustainable landfill



Tour Options

Landfill Bus Tour
requires bus



Landfill Overlook
NO bus required



PFAS Plant





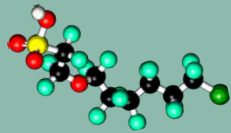
Program Summary

1 hour long

Educational Program

(Age: 8+)

PFAS the Forever Chemical



Topics Covered in Presentation

- What is PFAS and where did it come from
- How our PFAS water treatment plant works

Activity

Build a water filter



Tour Option

PFAS Plant

